

The Credit Union

For All Government Employees

mycreditunion.ca

Ontario Civil Service Credit Union Ltd.



We Dare You To Compare*

NEW CAR LOAN RATES **

THE CREDIT UNION ***
6.50%

TD CANADA TRUST
8.00%

ROYAL
7.35%

CIBC
7.00%

* Posted rates as of July 20, 2005. Rates subject to change.
** 60 month term.
*** Variable rate.
Some conditions apply.

IMPORTANT NOTICE

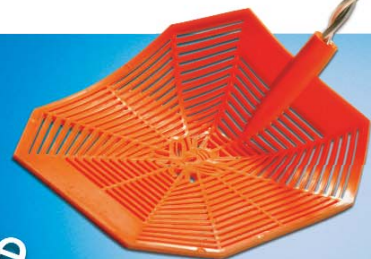
What to do on ATM Conversion Days

During the conversion to our new Network ATM processor, your branch ATM may be temporarily out of service (up to 48 hours). We recommend members use THE EXCHANGE® Network ATMs where we are waiving the fee until September 15th.

To find THE EXCHANGE® Network ATM in your area, visit www.the-exchange.ca or contact Member Assistance.

Say so long to those pesky surcharges...

... Say hello to THE EXCHANGE® Network starting September 1st!



Great news for all of our members!

The Credit Union is very pleased to announce that we've joined THE EXCHANGE® Network, a group of financial institutions that allow DEPOSITS AND WITHDRAWALS at over 1,600 participating ATMs across Canada without SURCHARGE FEES.

THE EXCHANGE® Network ATMs costs just \$1.00 per transaction, a savings of up to \$2.50 per transaction. (As always, you'll be able to use all of our credit union ATMs absolutely free of charge.)

We pay the dollar until September 15th.

As a bonus to our members, we will reimburse the regular \$1.00 charge until September 15th. If you're travelling around the province or coast to coast, you should find an EXCHANGE Network ATM just around the corner.



Plan Ahead

Sue Wyseman and Jan Jamieson are available to provide complimentary financial planning services to all members. Sue can be reached at wyseman@mycreditunion.ca and Jan at jamieson@mycreditunion.ca or through member assistance at 416-314-6772 or toll free at 1-888-516-6664.

TelPay When They Go Off To University

Online or Over The Phone – You Don't Need To Be At Home.

It's one of the fastest and easiest ways to transfer money from your bank account to any other bank account in Canada. **TelPay PersonalConnect™** is a new on-line transfer feature that enables you to put cash in your kids' account while they're concentrating on their studies. In fact, you can pay anyone - right from your home for just 75 cents a transaction.

No envelopes, no stamps, no more explaining "the cheque is in the mail!"

To use **TelPay PersonalConnect™** contact Member Assistance at 1-888-516-6664 or your branch today and we'll send you a Telpay application right away. Or visit www.telpay.ca for more information.

TelPay
e-payment services



The Impact Of Overspending

Since interest rates have been at 60-year lows, Canadian consumers have been spending at an alarming rate. What will happen if this era of low interest rates comes to an end? We seem to want everything now, and are unwilling to plan and save for it.

In actual fact, recent reports indicate that we are spending roughly 120% of our incomes, and supplementing this overspending with credit cards, lines of credit and the equity in our homes. For the first time since 1961, Statistics Canada announced we have become a nation of negative saving.

Decrease Debt Load, Increase Savings

By spending too much and increasing our debt load, we are putting future retirement lifestyle at risk. Most baby boomers today will retire and still owe on a mortgage and credit cards. How will you manage on 60% of your pre-retirement income? As we are living longer, will your retirement income last for up to 30 years?

That's why it's so important to take a look at the big picture now and talk to a financial advisor. We can help you find ways to cut back on spending and put a plan in place to pay down outstanding debts so you can tuck away more for your future. Right now, there are eight million baby boomers gearing up for retirement – the first wave will turn 60 in January, 2006. Regardless of your age, it is never too late to turn things around!

What do I do now?

Find out with GO Figure

You've tried the budget calculator, got tips on cash management strategies, figured out what your mortgage payments would be... What next? Scroll down the **GO Figure** page for "Next Steps"! It's your quick link back to The Credit Union's products, rates, and applications. Plus, "Next Steps" lets you e-mail your questions and comments directly to Member Assistance.

GO Figure, is a complimentary Online Resource Centre available to all of our members through our web site. Visit www.mycreditunion.ca, go to "planning tools", and click on **GO Figure**. Then simply choose the topic that interests you. You can even save your work and update it again and again. Take the next step today!

Celebrating 60 years!

Then - The Advent Of Automation:

The Credit Union has always kept pace with innovation and automation. It's hard to believe how much has changed in the past twenty years alone.

Our First Automated Teller Machine (ATM) was installed in MacDonald Block in early 1984. We were one of the first Canadian Financial Institutions to introduce telephone banking when our Direct Teller Service launched in 1988. As we entered the 1990's, we joined Interac and Cirrus ATM Networks, which gave our members 24-hour access to their accounts around the world. The 1990's saw many more advancements in technology for our credit union as we introduced automatic bill payment linked to our telephone banking.

As we moved into the year 2000, we continued to introduce innovative services such as internet banking over our website and a toll free call centre line.

Now:

The Credit Union continues to embrace technology without compromising on personal service. Our members love the ATM and Interac convenience, performing over 224,000 ATM transactions and 624,000 Direct Debit transactions a year. Member Assistance is only a toll-free number away, answering an average of 150 calls a day. 12% of our members are enjoying internet banking. And we join THE EXCHANGE Network this month, another value-added service that saves our members money on surcharges!

It's time your insurance got Personal

- Preferred rates – because you're a member of your credit union
- Convenient hours from 8 a.m. to 8 p.m. Mon. to Fri. and 8 a.m. to 4 p.m. Sat.
- 24/7 emergency claims assistance

It's time your insurance company recognized you!

Call for an insurance quote
1 888 476-8737
www.thepersonal.com



Want A QUICK QUOTE?
If you're shopping around for the best rate, visit our website at www.mycreditunion.ca, click on Home and Auto insurance and then The Personal icon.

MEMBER ASSISTANCE

416.314.6772

1.888.516.6664

MEMBERASSISTANCE@MYCREDITUNION.CA

The Credit Union

For All Government Employees
Ontario Civil Service Credit Union Ltd.

18 Grenville Street
Toronto ON M4Y 3B3
www.mycreditunion.ca

Member Assistance
416-314-6772 or 1-888-516-6664

Direct Teller
416-325-6818 or 1-800-387-0602